



Saitama Museum of Literature

The museum introduces literary figures and works associated with Saitama Prefecture from serious literature to manga and cartoons.



Recommended souvenirs

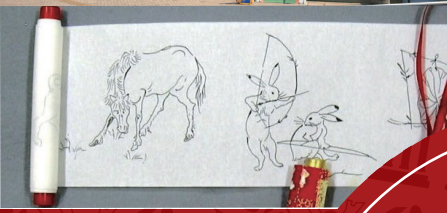
Left: Original letter pad (200 yen)
Right: Postcard (50 yen)



In the literary library, you can take in hand and read a variety of literature related to Saitama. In the literature exhibition room, nineteen literary figures closely associated with Saitama are featured on permanent exhibit, and special exhibitions and shows are held four times a year.



Closest station: Okegawa Station
1-5-9 Wakamiya, Okegawa-city, Saitama
Tel: +81 (0)48 -789 -1515



You can learn and play as much as you want!

SAITAMA Omotenashi museums

2018

just north of Tokyo



The Museum of Modern Art, Saitama

Various types of designed chairs are on exhibit, and the museum is also renowned as the Museum of Chairs. You can freely sit on the chairs and take photos.



Recommended souvenirs

Left: 3D Amazing Card (500yen~)
Right: Original tote bag (1,700 yen)



Exhibition rooms exhibit masterpieces created by the world's great artists, such as Claude Monet, Marc Chagall, and Pablo Picasso, as well as modern Japanese artists. The museum is located in a park with a dynamic music fountain and a diverse range of sculptures dotted about it.



Closest station: Kita-Urawa Station
9-30-1 Tokiwa, Urawa-ku, Saitama-city, Saitama
Tel: +81 (0)48 - 824 - 0111



Saitama Prefectural Ranzan Historical Museum

The museum is located in castle ruins where real samurai used to live. The ruins are designated a National Historical Monument and were chosen as one of the continued series of Japan's Top 100 castles by the Japan Castle Foundation.



What you can experience!

You can experience popular child's toys from the 1960s such as begoma (spinning top), takeuma (stilts), and otedama (beanbag juggling game).
★10 a.m. to 3 p.m. on November 14, 2018 (Wednesday/ Saitama Prefecture Day)



The exhibition room introduces the lives and mansions, as well as the castle, of samurai between the 12th and 16th centuries. A robot that looks like a Japanese warrior will welcome you and give a brief introduction to the museum.



Closest station: Musashi-Ranzan Station
757 Sugaya, Ranzan-machi, Hiki-gun, Saitama
Tel: +81 (0)493 - 62-5896



Access from Tokyo station

Museum of the Sakitama Ancient Burial Mounds

[From Tokyo, about 1 hour and 40 minutes]

- Tokyo station (JR Ueno Tokyo line) – Fukiage station (JR Takasaki line)
- Bus: 10 minutes
- Walk: 20 minutes

Saitama Museum of Natural History

[From Tokyo, about 2 hours and 25 minutes]

- Tokyo station (JR Ueno Tokyo line) – Kumagaya station (Chichibu railroad) – Kaminagatoro station
- Walk: 5 minutes

Saitama Museum of Rivers

[From Tokyo, about 2 hours and 30 minutes]

- Tokyo station (Tokyo Metro Marunouchi line) – Ikebukuro station (Tobu Toujou line, rapid) – Ogawamachi station (Tobu Toujou line) – Hachigata station
- Walk: 20 minutes

Saitama Prefectural Ranzan Historical Museum

[From Tokyo, about 1 hour and 50 minutes]

- Tokyo station (Tokyo Metro Marunouchi line) – Ikebukuro station (Tobu Toujou line, express) – Musashiranzan station
- Walk: 14 minutes

Saitama Museum of Literature

[From Tokyo, about 1 hour]

- Tokyo station (JR Ueno Tokyo line) – Okegawa station (JR Takasaki line)
- Walk: 5 minutes

The Museum of Modern Art, Saitama

[From Tokyo, about 40 minutes]

- Tokyo station (JR Keihin-tohoku line) – Kitaurawa station
- Walk: 3 minutes

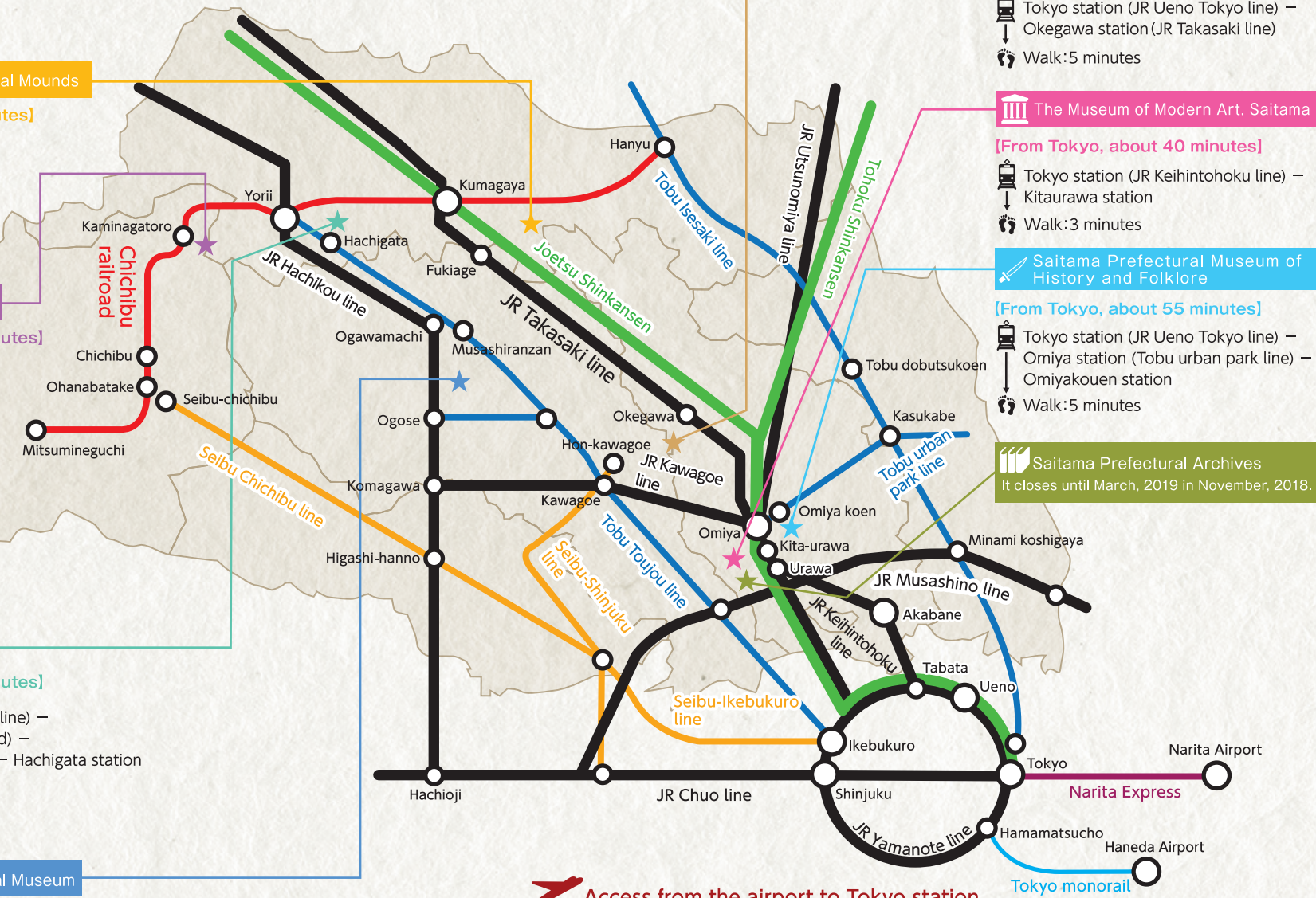
Saitama Prefectural Museum of History and Folklore

[From Tokyo, about 55 minutes]

- Tokyo station (JR Ueno Tokyo line) – Omiya station (Tobu urban park line) – Omiyakouen station
- Walk: 5 minutes

Saitama Prefectural Archives

It closes until March, 2019 in November, 2018.



Access from the airport to Tokyo station

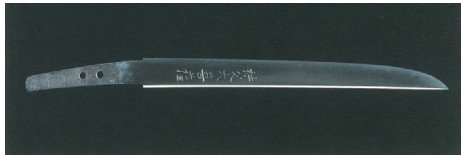




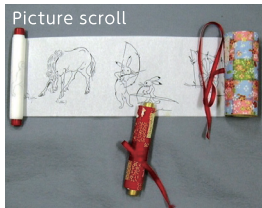
Saitama Prefectural Museum of History and Folklore

What you can see

You can see cultural resources in various eras on permanent exhibit themed on lives and culture of people in Saitama.



Aizome (indigo dyed) handkerchief



Picture scroll

What you can experience

At the "Monozukuri" craft workshop, you can make traditional Saitama crafts, such as indigo dyed handkerchiefs and picture scrolls.

Surrounding tourist spots

One of the best old shrines in Saitama, which is also famous as a power spot



[Musashi Ichinomiya Hikawa Shrine]
1-407 Takahana-cho, Omiya-ku, Saitama-city
(15-minute walk from the museum)

Neighboring Omiya Bonsai Village well known as a bonsai sanctuary

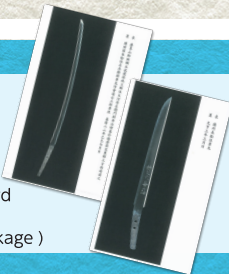


[Omiya Bonsai Art Museum]
2-24-3 Toro-cho, Kita-ku, Saitama-city
(15-minute walk from the museum)

Recommended souvenirs

Postcards of National Treasure designated swords

National Treasure sword and dagger
(200 yen for 2-in-1 package)



ACCESS

Closest station: Omiya Koen Station
4-219 Takahana-cho, Omiya-ku, Saitama-city, Saitama
Tel: +81 (0)48 - 641- 0890



Museum of the Sakitama Ancient Burial Mounds

What you can see

You can see the real National Treasure Artifacts from the Saitama Inariyama Kofun, such as Inariyama Sword made in the fifth century.



What you can experience

You can experience creating Magatama (comma-shaped gem) in the same size of the National Treasure designated one.



Recommended tour plan

Tokyo Station — (Train: 1 hour 10 minutes) — Fukiage Station (Bus and Walk: 30 minutes) — Walking around Sakitama Kofun Park and looking around Museum of the Sakitama Ancient Burial Mounds — (Bus: 20 minutes) — Tour of Japanese heritage Tabi warehouse in Gyoda-city/ Enjoying Gyoda's specialty Gyoda Jelly Fry — Gyoda-shi Station — (Train: 1 hour 30 minutes) — Tokyo Station

Surrounding tourist spots

Guinness World Record-winning rice field art
Giant artwork appears on Gyoda's paddy fields.



Gyoda lotus, supposed to be ancient lotus from about 1,400 to 3,000 years ago



Oshi Castle, one of the best seven castles in the Kanto area



[Oshi Castle]
17-23 Honmaru Gyoda-city
[Field art/ Ancient lotus]
2375 -1 Koaza-Kobari, Gyoda-city

Recommended souvenirs

Right: Iron sword-shaped pencil and character eraser (two pencils 100 yen, pencil and eraser set 100 yen)
Left: Inariyama Kofun (Burial Mound) Paper craft (300 yen)



ACCESS

Closest station: Fukiage Station
4834 Sakitama, Gyoda-city, Saitama
Tel: +81 (0)48 - 559 -1111

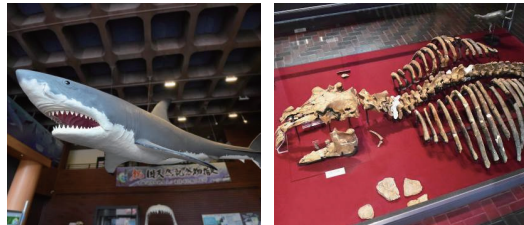




Saitama Museum of Natural History

What you can see

You can see one of the largest replicas of Carcharodon megalodon, the large shark that used to live in the time when Saitama was still in the ocean, and an actual fossil of Paleoparadoxia, which is designated a natural monument.



What you can experience

The museum provides a variety of experiential events every month that require prior registration. For example, in the fossil creating workshop, you can try making replicas that look like real fossils of the teeth of the large shark Carcharodon megalodon and ammonite.



Surrounding tourist spots

Fantastic maple tree illumination



In November, as the best time to view maple trees, you can enjoy illuminated maple trees in Tsukinoishi Momiji Park and the Museum of Natural History.

Lovely view of cherry blossom tunnel



The tunnel was selected as One of the Top 100 Cherry Blossom Views in Japan. In spring about 3000 cherry blossom trees turn the city into cherry-blossom colors.

Refresh yourself with Arakawa rafting



You can enjoy fresh water flows, clean air, and the magnificent beauty of the valley on traditional Japanese-style boats.

Steam train, closest from central Tokyo



You can fully enjoy magnificent views of the nature of Nagatoro by riding the Paleo Express, the SL train of Chichibu Railway.

Recommended souvenirs

About 1/18 of actual size / 3D paper puzzle (600 yen)



ACCESS

Closest station: Kaminagatoro Station
1417-1 Nagatoro, Nagatoro-machi, Chichibu-gun, Saitama
Tel: +81 (0)494- 66 - 0404



Saitama Museum of Rivers

What you can see and experience

The Saitama Museum of Rivers is a museum themed on the Arakawa River, the Mother River of Saitama Prefecture.

At the Arakawa Model 173, Japan's largest 3D model of a river, you can learn the geographic features of the Arakawa River and feel as if you were Gulliver. At the main exhibition hall, water flows through the hall and large replicas of the teppozeki (flashflood gate), funaguruma (water mill with a boat), nibune (carriage boat), and mizuka (mound for flood protection) are displayed. In addition, the museum provides a virtual theater called Adventure Theater Kawasemi, where the seats move to the action on the screen, and a water athletic facility called Arakawa Wakuwaku Land.



Recommended tour plan

Tokyo Station — (train: 2 hours 7 minutes) — Hachigata Station on the Tobu Tojo Line — (Walk: 20minutes) — Looking around the Saitama Museum of Rivers — (Walk: 30 minutes) — Walking around Yorii-city (Kawasemi Gawara River Beach, Hachigata Castle, Hachigata Castle Museum, Tamayodo Gawara River Beach, Enjoying Sauce Katsudon) — Yorii Station — (train: 2 hours 10 minutes) — Tokyo Station

Surrounding tourist spots



[Hachigata Castle]
Hachigata, Yorii-machi, Osato-gun

[Hachigata Castle Museum]
2496-2 Hachigata, Yorii-machi, Osato-gun

[Tamayodo Gawara river beach]
Yorii, Yorii-machi, Osato-gun

[Kawasemi Gawara river beach]
12 Oaza- Kozono, Yorii-machi, Osato-gun 12

Tour of sightseeing spots

You can explore the history of Yorii at Hachigata Castle, which was chosen as one of the best 100 castles in Japan, Hachigata Castle Museum, and Tamayodo Gawara, where the great literary figure Katal Tayama visited and admired the beauty of the area.

Feel Arakawa river

Kawasemi Gawara, a river beach of Arakawa, is located next to the museum, and you can enjoy fishing, camping, and outdoor BBQs. You may also be able to see the kawasemi (kingfisher) as in the name of the river beach.

Recommended souvenirs

Museum shop "Copain"

You can buy original goods, including T-shirts and pin badges with the design of Kawashiro, the mascot character of the museum.



ACCESS

Closest station: Walk from Hachigata Station
Taxi from Yorii Station
39 Kozono, Yorii-machi, Osato-gun, Saitama
Tel: +81 (0)48 -581-7333

